

About OpenTravel:

The OpenTravel Alliance provides a community where companies in the electronic distribution supply chain work together to create an accepted structure for electronic messages, enabling suppliers and distributors to speak the same interoperability language, trading partner to trading partner. Tens of thousands of the OpenTravel message structures are in use, carrying tens of millions of messages between trading partners every day.

Members do the work of identifying what messages are needed, prioritize the work and collaborate to create the messages. Members who are looking for more information on related project team work or who wish to access the OTM repository can send inquiries to architecture@opentravel.org.

Note: This document supports implementers using the OTM-DE Model Builder in the creation and sharing of models that automatically generate xml schema. The ability to access and extend the OpenTravel Model is available only to OpenTravel members. For more information please contact us at membership@opentravel.org.

OTM-DE Model Designer Installation

Document Purpose:

This document presents a step-by-step guide to install the OpenTravel Model Designer, the first step in installing OTM-DE (OpenTravel Model Developer Environment). The Model Designer is the UI or tool you use to create XML objects for your model.

Installation

Overview

This guide describes how to install the OpenTravel OTM-DE (OTM Development Environment) on a Windows PC. Specifically:

1. Task 1 covers installing a Java Virtual Machine (JVM).
2. Task 2 downloads and extracts the OTM-DE installation package

Note: OTM-DE has been successfully used on Apple products however these installation instructions do not cover Apple platforms.

Prerequisites

- Windows PC
- WinZip or other tool able to unpack a .zip file.

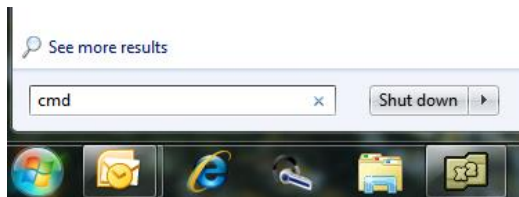
Task 1. Install Java

Overview: OTM-DE depends on being able to access a Java Virtual Machine (JVM). The JVM was not included to keep the size of the install package down and because most systems already have one installed. In this step you will check to see if a JVM is installed and accessible—if not you will install one from the Oracle web site.

1. **Determine if your system supports 64 bits.** OTM-DE supports both 64 and 32 bit installations. We recommend 64 bit if supported by your system. To determine your system capabilities, open your system pane in your control panel.

System	
Rating:	System rating is not available
Processor:	Intel(R) Core(TM) i5 CPU M 520 @ 2.40GHz 2.40 GHz
Installed memory (RAM):	4.00 GB (3.86 GB usable)
System type:	64-bit Operating System
Pen and Touch:	No Pen or Touch Input is available for this Display

2. **Open a command window.** How to do this varies with Windows versions. On Windows 7 you can enter “cmd” in the search bar on the start menu.



3. Run `java -version`

```

C:\windows\system32\cmd.exe
Microsoft Windows [Version 6.1.7601]
Copyright (c) 2009 Microsoft Corporation. All rights reserved.

C:\Users\sg0207825>java -version
java version "1.7.0_17"
Java(TM) SE Runtime Environment (build 1.7.0_17-b02)
Java HotSpot(TM) 64-Bit Server VM (build 23.7-b01, mixed mode)

C:\Users\sg0207825>
  
```

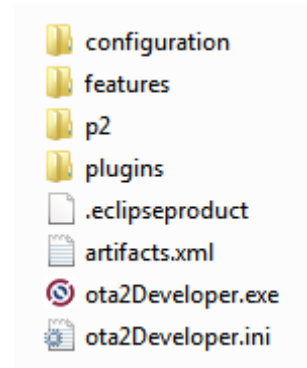
If your system responds with version 1.6 or 1.7 skip the next step, *Install Java*.

4. **Install Java** – if your system did not find Java or the version is older than 1.6 you will need to install java. Go to the [Oracle Java download site](#) and install the latest JRE (Java Runtime Engine). Here an [alternate Oracle.com site](#).
5. **Confirm installation** – repeat step 3.

Run java –version. If for any reason you do not get a response from Java, please contact your system administrator.

Task 2. Install OTM-DE

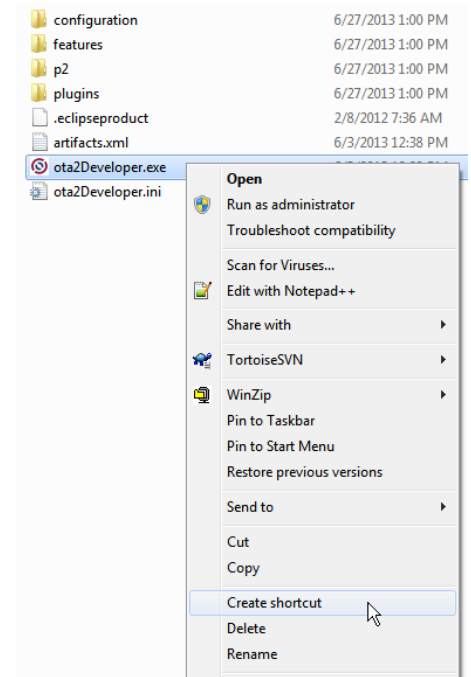
This task downloads and installs the OTM-DE application on your system. Unlike many applications, OTM-DE does not use an installer. OTM-DE is distributed as a compressed archive (.zip file) which when unpacked creates the directory from which the application is run.



1. Choose where you want to install OTM-DE.

You can install anywhere in your system. Typical locations include your desktop or in your system’s Program Files.

2. **Go to Download Site.** The latest releases of OTM-DE can be found ODN here - <http://www.opentripaveldevelopersnetwork.com/model-designer-app>.
3. **Select the release** that best fits your system. For Windows 64 bit systems, look for the “_64” just before the file name extension.
4. **Download** – select the link then the install directory identified in step 1.
5. **Unzip** – run WinZip or compatible tool to un-zip the download. Note, this process will create several sub-directories. Be sure to select “All files/folders in archive” or “Extract to here” options that extract the entire archive in one step--do not drag-n-drop or extract single files.
6. **Link Executable** – you can make it easier to start the application by creating shortcuts on your taskbar, start menu or desktop. Right-click on the ota2Developer.exe icon and select the “Create shortcut” option. You can then drag-n-drop the shortcut “Pin” it into place.



7. **Test** - Click on the shortcut or exe file to launch OTM-DE.

If Java was not installed correctly, you will get a warning message. Otherwise you should



see.

Congratulation - You got the splash screen and the application and are ready to create OTM 2.0 models.